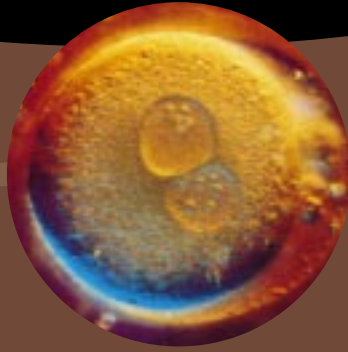


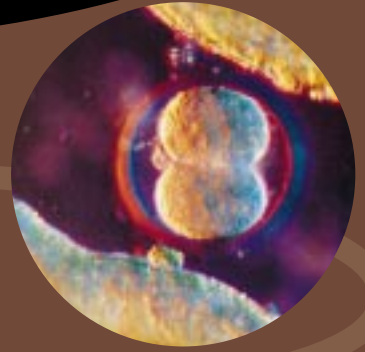
When are we human?



sperm enters ovum



fertilization (unique & complete human genome)



2 cell zygote (24 hrs.)



implantation (6 days)



4 week embryo (heartbeat at 3 wks)



7 week embryo (brainwaves at 6 wks)



2nd trimester fetus (18 wks.)



3rd trimester fetus (35 wks)



partially born fetus



newborn



toddler



young child



adolescent



young adult



elderly adult